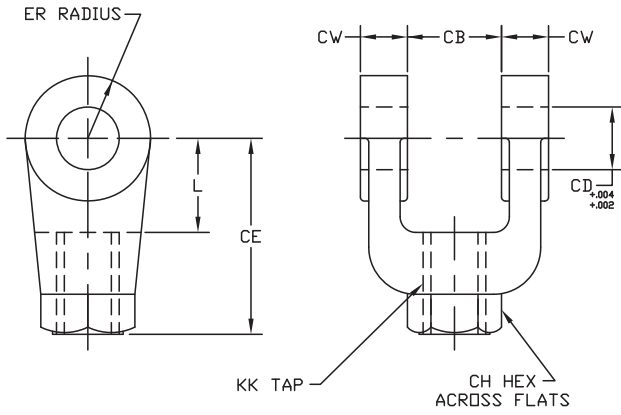
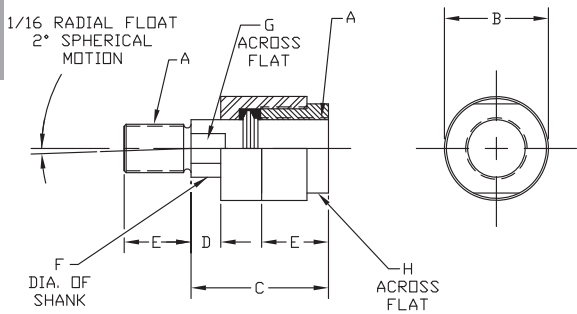


FEMALE CLEVIS



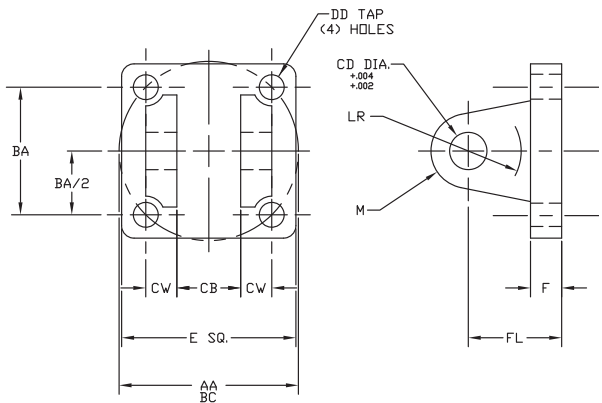
PART NO.	CB	CD	CE	CH	CW	ER	KK	L
10-YFC-134-05-A	3/4	1/2	1 1/2	1	1/2	1/2	7/16-20	3/4
10-YFC-134-08-A	1 1/4	3/4	2 3/8	1 1/4	5/8	3/4	3/4-16	1 1/4
10-YFC-134-08-M	1 1/4	3/4	2 1/8	1 3/8	5/8	3/4	3/4-16	1
10-YFC-134-11-A	1 1/2	1	3 1/8	1 1/2	3/4	1	1-14	1 1/2
10-YFC-134-11-M	1 1/2	1	2 15/16	1 1/2	3/4	1	1-14	1 5/16
10-YFC-134-14-A	2	1 3/8	4 1/8	2	1	1 3/8	1 1/4-12	2 1/8
10-YFC-134-14-M	2	1 3/8	3 3/4	2	1	1 3/8	1 1/4-12	1 3/4
10-YFC-134-16-A	2 1/2	1 3/4	4 1/2	2 3/8	1 1/4	1 3/4	1 1/2-12	2 1/4

ROD COUPLERS



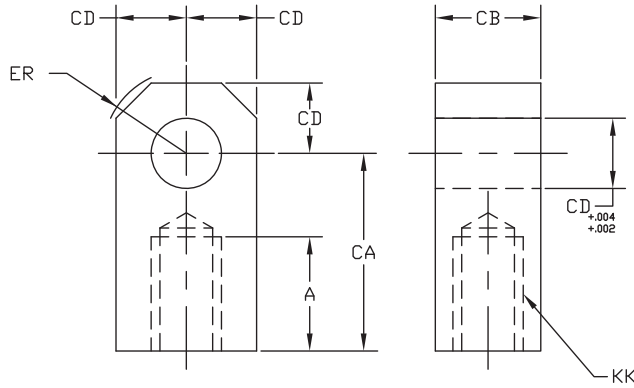
PART NUMBER	ROD DIA.	A	B	C	D	E	F	G	H	MAX PULL
11-YAC-2-05	5/8	7/16-20	1 1/4	2	1/2	3/4	5/8	1/2	1	10,000
11-YAC-2-06	5/8	1/2-20	1 1/4	2	1/2	3/4	5/8	1/2	1	14,000
11-YAC-2-07	5/8	5/8-18	1 1/4	2	1/2	3/4	5/8	1/2	1	19,000
11-YAC-2-08	1	3/4-16	1 3/4	2 5/16	1/2	1 1/8	31/32	13/16	1 1/2	34,000
11-YAC-2-09	1	7/8-14	1 3/4	2 5/16	1/2	1 1/8	31/32	13/16	1 1/2	39,000
11-YAC-2-11	1 3/8	1-14	2 1/2	2 15/16	1/2	1 5/8	1 3/8	1 5/32	2 1/4	64,000
11-YAC-2-14	1 3/8	1 1/4-12	2 1/2	2 15/16	1/2	1 5/8	1 3/8	1 5/32	2 1/4	78,000
11-YAC-2-15	1 3/8	1 3/8-12	2 1/2	2 15/16	1/2	1 5/8	1 3/8	1 5/32	2 1/4	78,000
11-YAC-2-16	2	1 1/2-12	3 1/4	4 3/8	13/16	2 1/4	1 3/4	1 1/2	3	134,000

CLEVIS BRACKET



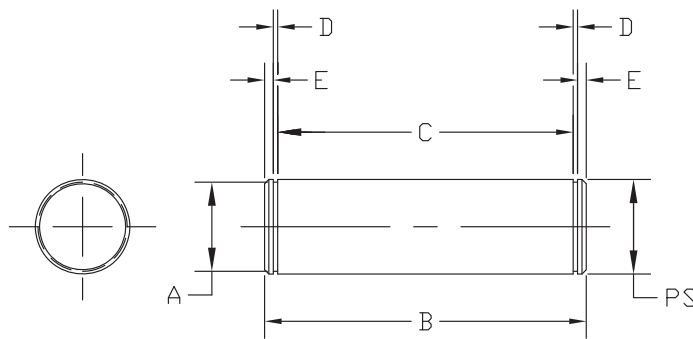
PART NUMBER	AA	BA	CB	CD	CW	DD	E	F	FL	LR	M
14-YCB-133-03	2.3	1 5/8	25/32	1/2	1/2	5/8-24	2 1/2	3/8	1 1/8	1/2	1/2
14-YCB-133-04	2.9	2 1/16	1 9/32	3/4	5/8	1/2-20	3	5/8	1 7/8	1	3/4
14-YCB-133-05	3.6	2 9/16	1 9/32	3/4	5/8	1/2-20	3 1/2	5/8	1 7/8	1 1/16	3/4
14-YCB-133-06	4.6	3 1/4	1 17/32	1	3/4	5/8-18	4 1/2	3/4	2 1/4	1 1/4	1
14-YCB-133-08	5.4	3 13/16	2 1/32	1 3/8	1	5/8-18	5	7/8	3	1 7/8	1 3/8
14-YCB-133-10	7.0	4 15/16	2 17/32	1 3/4	1 1/4	7/8-14	6 1/2	7/8	3 1/8	2	1 3/4

FEMALE EYE



PART NUMBER	A	CA	CB	CD	ER	KK
13-YE-9303	3/4	1 1/2	3/4	1/2	5/8	7/16-20
13-YE-9304	1 1/8	2 1/16	1 1/4	3/4	7/8	3/4-16
13-YE-9306	1 5/8	2 13/16	1 1/2	1	1 3/16	1-14
13-YE-9306-M	1 1/8	2 3/8	1 1/2	1	1 7/16	7/8-14
13-YE-9308	2	3 7/16	2	1 3/8	1 9/16	1 1/4-12
13-YE-9310	2 1/4	4	2 1/2	1 3/4	2	1 1/2-12

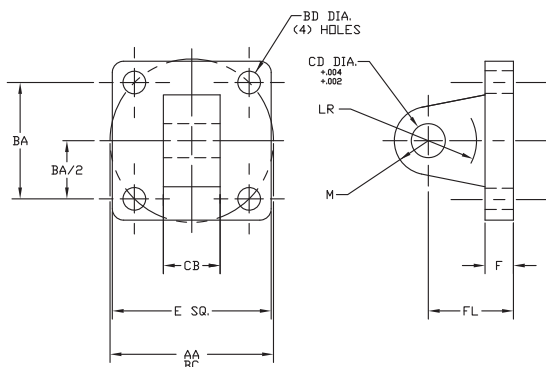
PIVOT PIN



PART NUMBER	PIN SIZE	A	B	C	D	E
12-YP-9003-3-G-A	.500	.470	2.109	1.875	.039	.078
12-YP-9004-3-G-A	.750	.707	2.901	2.625	.046	.092
12-YP-9006-3-G-A	1.000	.943	3.401	3.125	.046	.092
12-YP-9008-3-G-A	1.375	1.295	4.461	4.125	.056	.122
12-YP-9010-3-G-A	1.750	1.655	5.545	5.125	.070	.140

EYE BRACKET

PART NUMBER	AA	BA	BD	CB	CD	E	F	FL	LR	M
15-YEB-8903	2.3	1 5/8	13/32	3/4	1/2	2 1/2	3/8	1 1/8	1/2	1/2
15-YEB-8904	3.6	2 9/16	17/32	1 1/4	3/4	3 1/2	5/8	1 7/8	1	3/4
15-YEB-8906	4.6	3 1/4	21/32	1 1/2	1	4 1/2	3/4	2 1/4	1	1
15-YEB-8908	5.4	3 13/16	21/32	2	1 3/8	5	7/8	3	1 1/8	1 3/8
15-YEB-8910	7.0	4 15/16	29/32	2 1/2	1 3/4	6 1/2	7/8	3 1/8	1 3/4	1 3/4
15-YEB-8910H	7.0	4 15/16	29/32	2 1/2	1 3/4	6 1/2	1 1/8	3 3/8	1 3/4	1 3/4



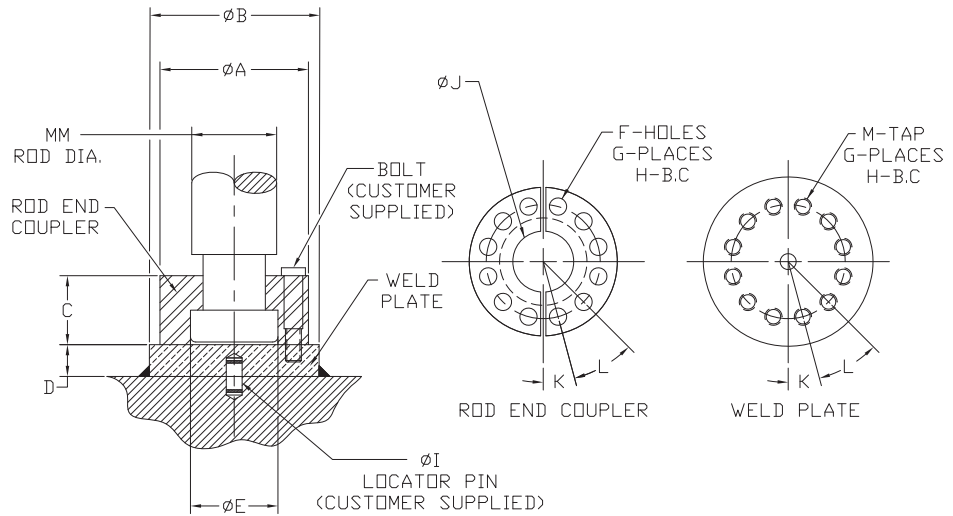
SWIVEL EYE BRACKET

PART NUMBER	AA	BA	BD	CB	CD	E	F	FL	LR	M	DYNAMIC	STATIC
15-YSB-219-3-1	2.3	1 5/8	13/32	3/4	1/2	2 1/2	3/8	1 1/8	1/2	11/16	3,150	9,338
15-YSB-219-3-2	3.6	2 9/16	17/32	1 1/4	3/4	3 1/2	5/8	1 7/8	1	1 3/16	7,088	20,925
15-YSB-219-3-3	4.6	3 1/4	21/32	1 1/2	1	4 1/2	3/4	2 1/4	1	1 3/8	12,600	37,350
15-YSB-219-3-4	5.4	3 13/16	21/32	2	1 3/8	5	7/8	3	1 1/8	2	23,400	69,750
15-YSB-219-3-5	7.0	4 15/16	29/32	2 1/2	1 3/4	6 1/2	7/8	3 1/8	1 3/4	2 1/8	38,250	114,750

(Includes spacers to allow swivel action up to 7° and to make dimensions interchangeable with standard eye bracket.)
NOTE: To assure precision fit-up, pivot pins machined to special tolerances are furnished with all swivel eye brackets unless otherwise specified.

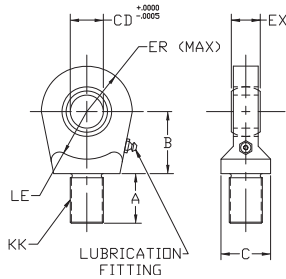


ROD END COUPLER AND WELD PLATE



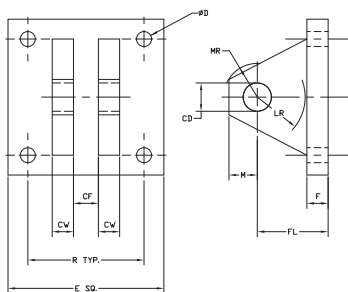
ROD END COUPLER PART#	WELD PLATE PART#	WELD PLATE MATERIAL	MM	A	B	C	D	E	F	G	H	I	J	K	L	M
18-FEC-062	18-FEC-062-WP	CD 1018	5/8	1.500	2.000	.562	.500	.656	.218	4	1.125	250	406	45°	90°	10-24
18-FEC-100	18-FEC-100-WP	CD 1018	1	2.000	2.500	.875	.500	1.063	.281	6	1.500	250	.750	30°	60°	1/4-20
18-FEC-137	18-FEC-137-WP	CD 1018	1 3/8	2.500	3.000	1.000	.625	1.438	.343	6	2.000	250	.938	30°	60°	5/16-18
18-FEC-175	18-FEC-175-WP	CD 1018	1 3/4	3.000	4.000	1.250	.625	1.813	.343	8	2.375	250	1.187	22.5°	45°	5/16-18

MALE SPHERICAL ROD EYE



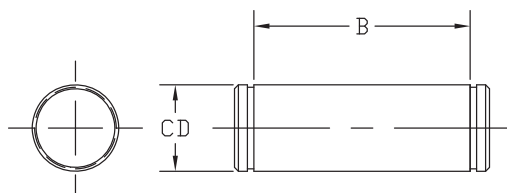
PART NUMBER	CD	KK	A	B	C	ER	EX	LE	MAX LOAD
13-MSRE-0500	.5000	7/16-20	11/16	7/8	7/8	7/8	7/16	3/4	2,600
13-MSRE-0750	.7500	3/4-16	1	1 1/4	1 5/16	1 1/4	21/32	1 1/16	7,080
13-MSRE-1000	1.000	1-14	1 1/2	1 7/8	1 1/2	1 3/8	7/8	1 7/16	12,590
13-MSRE-1375	1.3750	1 1/4-12	2	2 1/8	2	1 13/16	1 3/16	1 7/8	22,930
13-MSRE-1750	1.7500	1 1/2-12	2 1/8	2 1/2	2 1/4	2 3/16	1 17/32	2 1/8	38,220

SPHERICAL CLEVIS BRACKET



PART NUMBER	CD	CF	CW	D	E	F	FL	M	MR	LR	R
14-YCB-133-03-CBS	.500	.44	.50	.41	3.00	.50	150	.50	.62	.94	205
14-YCB-133-05-CBS	.750	.66	.62	.53	3.75	.62	200	.88	1.00	1.38	2.76
14-YCB-133-06-CBS	1.000	.88	.75	.53	5.50	.75	250	1.00	1.19	1.69	4.10
14-YCB-133-08-CBS	1.375	1.19	1.00	.66	6.50	.88	350	1.38	1.62	2.44	4.95
14-YCB-133-10-CBS	1.750	1.53	1.25	.91	8.50	1.25	450	1.75	2.06	2.88	6.58

SPHERICAL PINS



PART NUMBER	CD	B
12-YP-9003-3-G-CBS	.4997	+0.000 -0.004
12-YP-9004-3-G-CBS	.7497	+0.000 -0.005
12-YP-9006-3-G-CBS	.9997	+0.000 -0.005
12-YP-9008-3-G-CBS	1.3746	+0.000 -0.006
12-YP-9010-3-G-CBS	1.7496	+0.000 -0.006