

# Hydraulic Gear Pump Model GP-CBN

## Technical Data

Model GP-CBN is a HI/LO Hydraulic Gear Pump with 12 displacement combinations with maximum pressures of 900 psi for the low pressure pump and 3000 psi for the high pressure pump. The change from LO to HI pressure is automatic with the LO side pressure pre set from 400 psi to 900 psi. The HI/LO pump is allcast Iron.



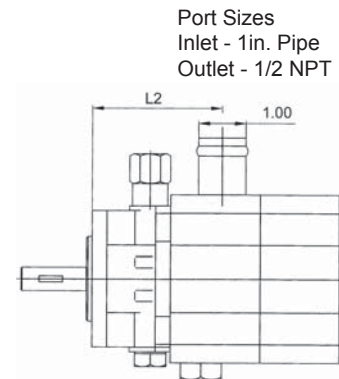
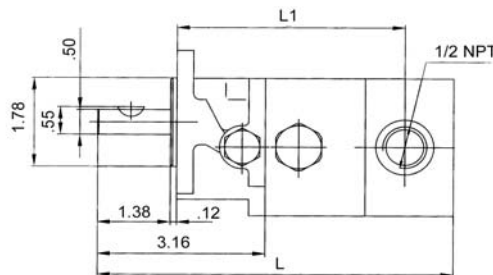
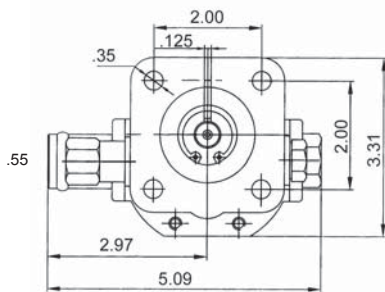
Applications for the HI/LO pump are log splitters, presses etc. where rapid movement of the cylinder at low pressure is required prior to automatically switching to the high pressure mode to meet load requirements.

- Recommended working conditions: 1. FILTRATION 25 micron or better. 2. OIL VISCOSITY 6 to 200 cSt  
 3. INLET PRESSURE 12 to 32 psi abs. 4. OIL TEMPERATURE -25 to 80 degrees C (-12 to 175 degrees F).  
 5. AMBIENT -22 to 55 degrees C (-8 to 130 degrees F). Flow rate in gpm Displacement (cu.in/rev) X speed (rpm) / 231 Volumetric efficiency % ≥93

Model Prefix GP	Flow GPM at 3600 rpm	Displ. cu.in/rev		Pressure psi		Speed RPM
		LO Pressure	HI Pressure	LO	HI	
CBN-080	8	0.384	0.128	400/900	3000	3600
*CBN-085	8.5	0.385	0.183	400/900	3000	3600
CBN-090	9	0.385	0.220	400/900	3000	3600
*CBN-100	10	0.537	0.130	400/900	3000	3600
*CBN-105	10.5	0.537	0.183	400/900	3000	3600
CBN-110	11	0.537	0.189	400/900	3000	3600

Model Prefix GP	Flow GPM at 3600 rpm	Displ. cu.in/rev		Pressure psi		Speed RPM
		LO Pressure	HI Pressure	LO	HI	
*CBN-115	11.5	0.537	0.256	400/900	3000	3600
*CBN-120	12	0.665	0.130	400/900	3000	3600
*CBN-125	12.5	0.665	0.183	400/900	3000	3600
CBN-130	13	0.646	0.189	400/900	3000	3600
*CBN-135	13.5	0.665	0.256	400/900	3000	3600
CBN-160	16	0.775	0.256	400/900	3000	3600

## Installation Data



Port Sizes  
 Inlet - 1in. Pipe  
 Outlet - 1/2 NPT

Model Prefix GP	Dspl. cc	Dimensions		
		L	L1	L2
CBN-080	6.3/2.1	6.07	3.74	2.41
CBN-085	6.3/3.0	6.21	3.90	2.41
CBN-090	6.3/3.6	6.28	3.90	2.14
CBN-100	8.8/2.1	6.41	4.08	2.74

Model Prefix GP	Dspl. cc	Dimensions		
		L	L1	L2
CBN-105	8.8/3.0	6.54	4.08	2.74
CBN-110	8.8/3.6	6.61	4.24	2.74
CBN-115	8.8/4.2	6.70	4.24	2.74
CBN-120	10.9/2.1	6.70	4.37	3.04

Model Prefix GP	Dspl. cc	Dimensions		
		L	L1	L2
CBN-125	10.9/3.0	6.90	4.53	3.04
CBN-130	10.9/3.6	7.00	4.53	3.04
CBN-135	10.9/4.2	7.09	4.53	3.04
CBN-160	13.0/4.2	6.70	4.37	3.04

## Ordering Information

GP - CBN - 160 - P - C

Gear Pump

HI/LO series

Nominal Flow GPM @ 3600 rpm  
 080/\*085/090/\*100/\*105/110  
 \*115/120/ \*125/130\*135/160

Drive Shaft  
 P - 1/2" Dia  
 Straight

Rotation  
 Direction  
 C – Clockwise  
 A – Counter Clockwise  
 (viewed from drive shaft end)

\*Note: Displacement can be Custom Per Requirements. Special order only  
 Minimum quantity apply. Please consult Factory  
**Houston Hydraulic**  
**713-692-4421**

[www.HoustonHydraulic.com](http://www.HoustonHydraulic.com)

[Sales@HouHyd.com](mailto:Sales@HouHyd.com)